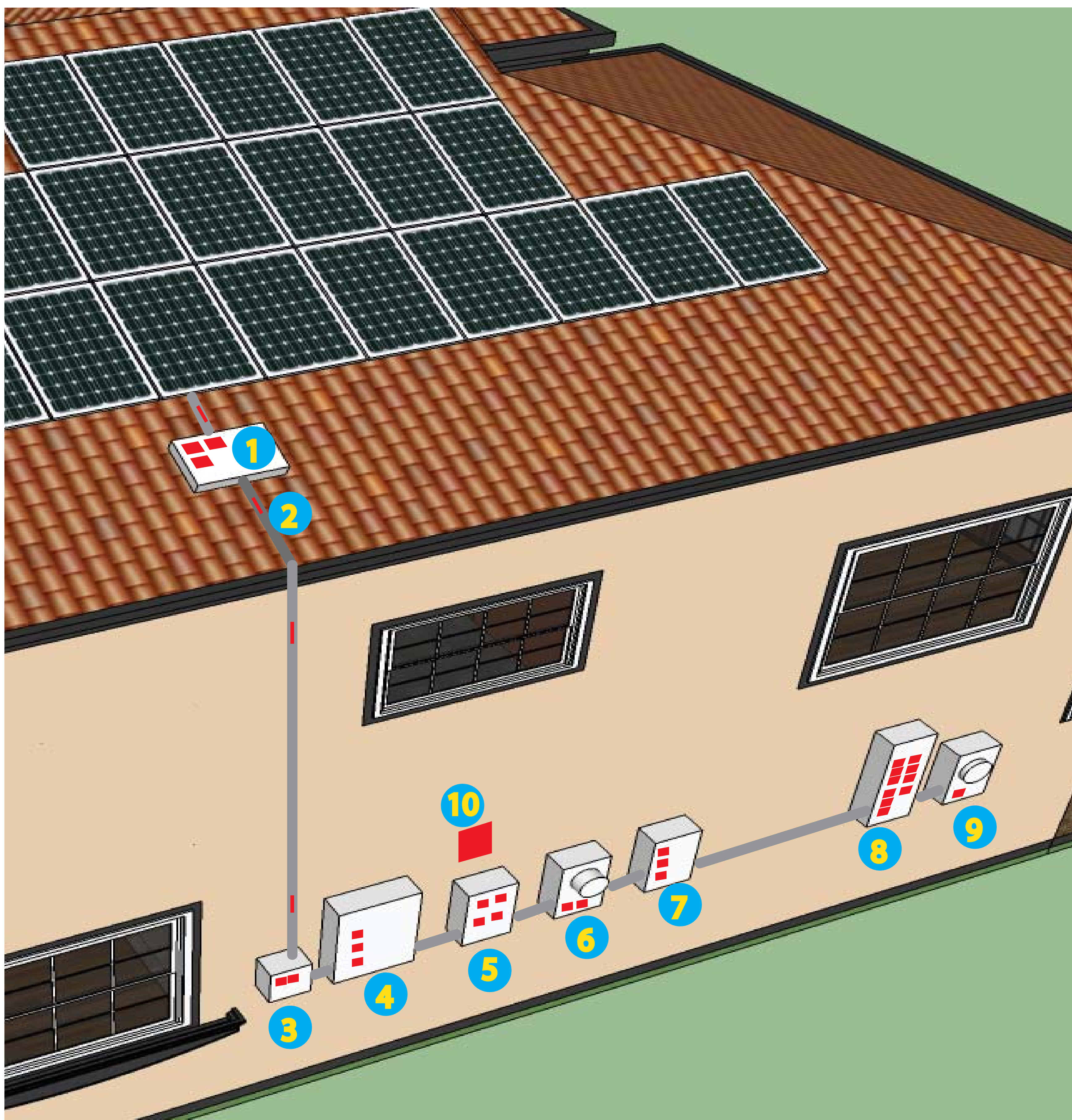




Blue Sky Technologies, USA, LLC.
 1967 Rt 27 Suite 12
 Edison, NJ 08817

PHOTOVOLTAIC SYSTEM
LABELING
 REQUIREMENTS
 NEC 2014 ARTICLE 690 and IFC 2012



1 Combiner Box/Circuits/ Conduit Combiner Box/ Enclosures/ EMT Enclosures

WARNING
ELECTRICAL SHOCK HAZARD
 DO NOT TOUCH TERMINALS
 TERMINALS ON BOTH LINE AND
 LOAD SIDES MAY BE ENERGIZED
 IN THE OPER POSITION
 NEC 690.17(E)

WARNING
ELECTRICAL SHOCK HAZARD
 THE DC CONDUCTORS OF THIS
 PHOTOVOLTAIC SYSTEM ARE UNGROUNDED
 AND MAY BE ENERGIZED
 NEC 690.35(F)

WARNING
 TURN OFF PHOTOVOLTAIC
 AC DISCONNECT PRIOR TO
 WORKING INSIDE PANEL
 NEC 110.27(C)&OSHA 1910.145(F)(7)

2 EMT/Conduit Raceways
**(Reflective Materials Required)*

WARNING
PHOTOVOLTAIC POWER SOURCE
 DO NOT REMOVE UNLESS REPLACED IN EXACT LOCATION PV POWER CIRCUIT DIRECTLY BELOW
 NEC 690.4(F)

**WARNING: PHOTOVOLTAIC
 POWER SOURCE**
 NEC 690.31

3 DC Disconnect /Breaker/
 Recombiner Box

RATED MAX POWER-POINT CURRENT:
 RATED MAX POWER-POINT VOLTAGE:
 MAXIMUM SYSTEM VOLTAGE:
 MAXIMUM CIRCUIT CURRENT:
 MAX RATED OUTPUT CURRENT OF
 THE CHARGE CONTROLLER IF INSTALLED:
 NEC 690.53

PV SYSTEM DC DISCONNECT
 OPERATING CURRENT:
 OPERATING VOLTAGE:
 MAXIMUM SYSTEM VOLTAGE:
 SHORT CIRCUIT CURRENT:
 NEC 690.53

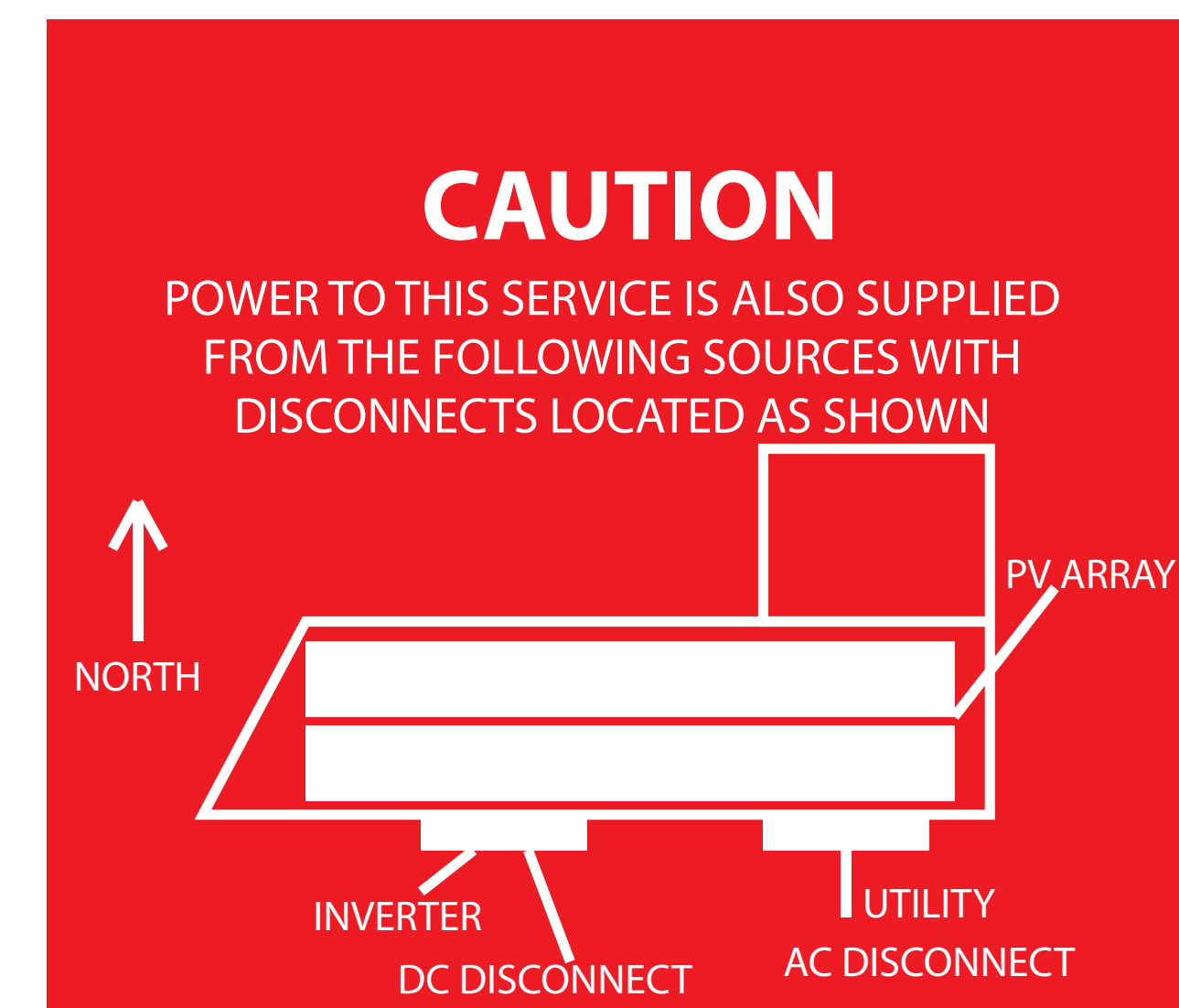
WARNING
ELECTRICAL SHOCK HAZARD
 THE DC CONDUCTORS OF THIS
 PHOTOVOLTAIC SYSTEM ARE UNGROUNDED
 AND MAY BE ENERGIZED
 NEC 690.35(F)

**PHOTOVOLTAIC
 AC DISCONNECT**
 IFC 605.11.3, IFC 605.11.1.4, NEC 690.15,
 NEC 690.13(B)& NEC 690.14(C)(2)

WARNING
ELECTRICAL SHOCK HAZARD
 DO NOT TOUCH TERMINALS
 TERMINALS ON BOTH LINE AND
 LOAD SIDES MAY BE ENERGIZED
 IN THE OPER POSITION
 DC VOLTAGE IS ALWAYS PRESENT
 WHEN SOLAR MODULES
 ARE EXPOSED TO SUNLIGHT
 NEC 690.17(E)

RATED AC OPERATING CURRENT:
 MAX RATED AC OPERATING CURRENT:
 RATED AC OPERATING VOLTAGE:
 MAX RATED AC OPERATING VOLTAGE:
 RATED SHORT CIRCUIT CURRENT:
 MAXIMUM SYSTEM VOLTAGE:
 FOR MARKING DC BACKUP SYSTEM

10 BUILDING/ STRUCTURE



4 Inverter

WARNING
ELECTRICAL SHOCK HAZARD
 IF A GROUND FAULT IS INDICATED
 NORMALLY GROUNDED CONDUCTORS
 MAY BE UNGROUNDED AND ENERGIZED
 NEC 690.5(C)

WARNING
 BIPOLAR PHOTOVOLTAIC ARRAY.
 DISCONNECTION OF NEUTRAL
 OR GROUNDED CONDUCTORS
 MAY RESULT IN OVERVOLTAGE
 ON ARRAY OR INVERTER
 NEC 690.4(G)

PHOTOVOLTAIC AC DISCONNECT
 MAXIMUM AC OPERATING CURRENT:
 NOMINAL OPERATING AC VOLTAGE:
 NEC 690.54

6 Production/ Net Meter

WARNING
ELECTRICAL SHOCK HAZARD
 IF A GROUND FAULT IS INDICATED
 NORMALLY GROUNDED CONDUCTORS
 MAY BE UNGROUNDED AND ENERGIZED
 NEC 690.5(C)

if Bi-directional
 Production meter

WARNING DUAL POWER SOURCE
 SECOND SOURCE IS PHOTOVOLTAIC SYSTEM
 NEC 705.12(D)(4) & NEC 690.64

**CAUTION: SOLAR ELECTRIC
 SYSTEM CONNECTED**
 NEC 690.15 & NEC 690.13(B)

5 AC Disconnect/
 Breaker/
 Points of Connection

**PHOTOVOLTAIC
 AC DISCONNECT**
 IFC 605.11.3, IFC 605.11.1.4, NEC 690.15,
 NEC 690.13(B)& NEC 690.14(C)(2)

NOMINAL OPERATING AC VOLTAGE:
 NOMINAL OPERATING AC FREQUENCY:
 NOMINAL AC POWER:
 MAXIMUM AC CURRENT:
 MAX OVERCURRENT DEVICE RATING
 FOR AC MODULE PROTECTION:
 NEC 690.52

PHOTOVOLTAIC AC DISCONNECT
 MAXIMUM AC OPERATING CURRENT:
 NOMINAL OPERATING AC VOLTAGE:
 NEC 690.13(B)

WARNING
ELECTRICAL SHOCK HAZARD
 DO NOT TOUCH TERMINALS
 TERMINALS ON BOTH LINE AND
 LOAD SIDES MAY BE ENERGIZED
 IN THE OPER POSITION
 NEC 690.17 (E)

8 Main Service Disconnect

WARNING
ELECTRICAL SHOCK HAZARD
 DO NOT TOUCH TERMINALS
 TERMINALS ON BOTH LINE AND
 LOAD SIDES MAY BE ENERGIZED
 IN THE OPER POSITION
 NEC 690.17(E)

WARNING
 TURN OFF PHOTOVOLTAIC
 AC DISCONNECT PRIOR TO
 WORKING INSIDE PANEL
 NEC 110.27(C)&OSHA 1910.145(F)(7)

**PHOTOVOLTAIC SYSTEM
 EQUIPPED WITH
 RAPID SHUTDOWN**
 NEC 690.56(B)

9 Main Service Disconnect/
 Utility Meter

**MAIN PHOTOVOLTAIC
 SYSTEM DISCONNECT**
 NEC 690.15 & NEC 690.13(B)

7 Breaker Panel/ Pull Boxes

WARNING
ELECTRICAL SHOCK HAZARD
 DO NOT TOUCH TERMINALS
 TERMINALS ON BOTH LINE AND
 LOAD SIDES MAY BE ENERGIZED
 IN THE OPER POSITION
 NEC 690.17(E)

WARNING
 TURN OFF PHOTOVOLTAIC
 AC DISCONNECT PRIOR TO
 WORKING INSIDE PANEL
 NEC 110.27(C)

WARNING
 SINGLE 120-VOLT SUPPLY
 DO NOT CONNECT
 MULTIWIRED BRANCH CIRCUITS
 NEC 690.10(C)

CAUTION
 PHOTOVOLTAIC SYSTEM CIRCUIT IS BACKFED
 NEC 705.15(D)(4)

WARNING
 INVERTER OUTPUT CONNECTION, DO NOT
 RELOCATE THIS OVERCURRENT DEVICE
 NEC 705.12(D)(2)(C)

WARNING
ELECTRICAL SHOCK HAZARD
 IF A GROUND FAULT IS INDICATED
 NORMALLY GROUNDED CONDUCTORS
 MAY BE UNGROUNDED AND ENERGIZED
 NEC 690.5(C)

WARNING
ELECTRICAL SHOCK HAZARD
 THE DC CONDUCTORS OF THIS
 PHOTOVOLTAIC SYSTEM ARE UNGROUNDED
 AND MAY BE ENERGIZED
 NEC 690.35(F)

PHOTOVOLTAIC AC DISCONNECT
 MAXIMUM AC OPERATING CURRENT:
 NOMINAL OPERATING AC VOLTAGE:
 NEC 690.54

WARNING DUAL POWER SOURCE
 SECOND SOURCE IS PHOTOVOLTAIC SYSTEM
 NEC 705.12(D)(4) & 690.64

**DO NOT DISCONNECT
 UNDER LOAD**
 NEC 690.33(E)(2)